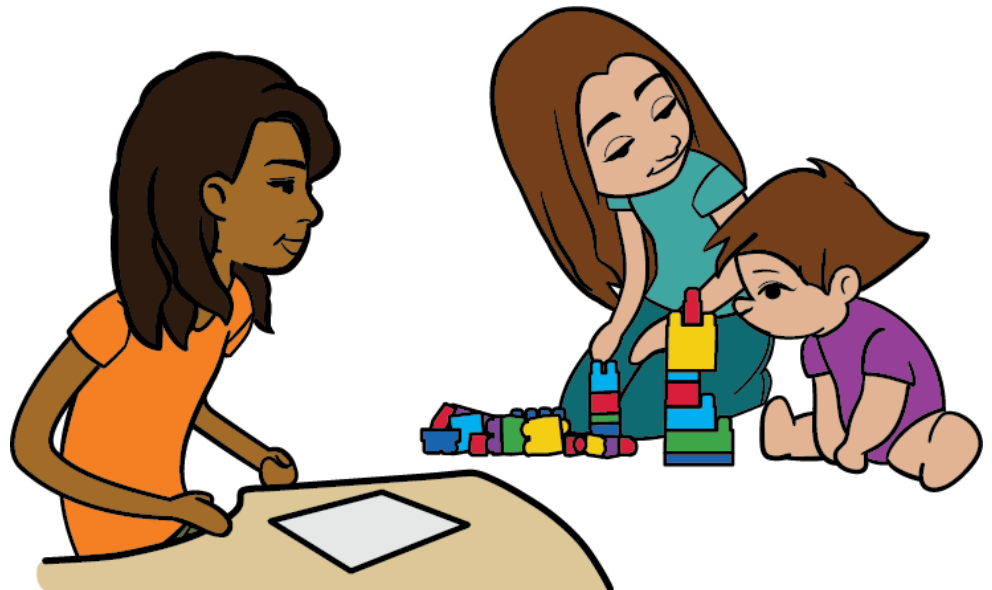
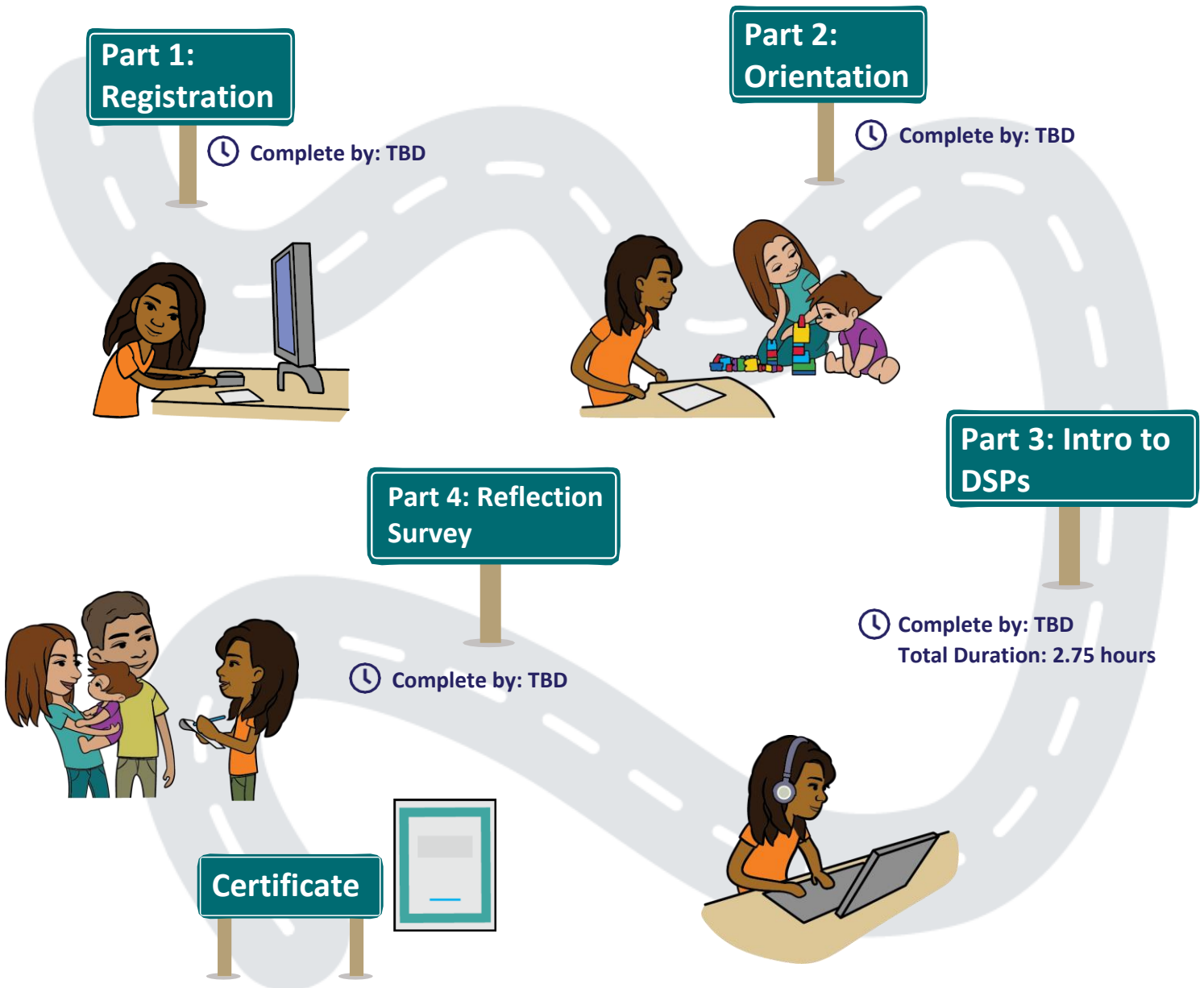


Strategies for Support: Developmental Support Plan Training

A 4-part training for frontline practitioners working with infants, young children, and their families, to recognize and respond to early concerns about a child's development.



Strategies for Support: Developmental Support Plan Training



Contact nicole.tuzi@sickkids.ca for content-related inquiries, and iemhp.learning@sickkids.ca for registration or technical issues.

Link to the training website:
<https://learning.iemhp.ca/Login/Login.aspx>

Training Overview

Welcome to the ***Strategies for Support: Developmental Support Plan Training!***

Hand in Hand is an evidence-based resource practitioners can use to provide families with an immediate response to developmental concerns. Despite the robust evidence showing the profound role early experiences have on short- and long-term developmental outcomes, many children languish on waiting lists for several months. These wait times further derail development and leave caregivers feeling helpless. Through this training participants will be introduced to Hand in Hand and learn how to provide families with a Developmental Support Plan (DSP) that is responsive to a child's developmental needs.

In this training, participants will:

- Gain a better understanding of developmental support plans and the benefits in supporting children's development with concrete strategies
- Implement the knowledge of infant and early mental health and developmental support planning into their practice and how they support families of young children
- Understand and navigate the resource manual(s) and the DSP template
- Make the appropriate decisions to support a child's development

Participants will receive a certificate of completion once they have watched a series of pre-recorded webinars and participated in live coaching sessions.

Cost: TBD

Learner Acknowledgement: You will be required to acknowledge a Learner Acknowledgement that outlines the expectations of the training. [Read the Learner Acknowledgement.](#)

Cancellation Policy: Refunds are applicable if the participant requests withdrawal from the training prior to participating in Part 3a: Introduction to DSPs (TBD). If the participant does not make the request prior to this date, the fees still apply, and the participant will not be eligible for certification.

Prerequisite: *Introduction to Infant and Early Mental Health* is required in advance of enrollment into the Developmental Support Plan Training. [Register for the Introduction to Infant and Early Mental Health webinar.](#)

Your Training Team



Nicole Tuzi
**Training and Education
Manager**
Email:
nicole.tuzi@sickkids.ca



Rup Patel
Project Coordinator
Email:
iemhp.learning@sickkids.ca



Nikki Abad
Administrative Coordinator
Email:
iemhp.learning@sickkids.ca

Training Calendar

Training Parts	Duration	Deadlines
Register for <i>Strategies for Support: Developmental Support Plan Training</i>		Registration opens TBD Register before TBD
Orientation (must attend ONE)	30 minutes	TBD
Part 3a: DSP Webinars Part 3b: DSP Learning Activity	Part 3a: 1.5 hours Part 3b: 15 minutes	Complete before TBD
Part 3c: DSP Coaching Session (must attend ONE)	1.5 hours	TBD
Training Closes		TBD
Time Commitment TOTAL	3.75 hours	

Training Description

1

Part 1: Registration

Complete by: TBD

To enroll in the training, you must sign the Learner Acknowledgement and select your Orientation and DSP Coaching Sessions.

- Step 1:** Register for the **Strategies for Support: Developmental Support Plan Training**.
- Step 2:** On the left-hand side, click on **PURCHASE**
- Step 3:** Enter your payment information and complete your enrollment in the training. Once you have successfully enrolled in the training, the training will appear under your **MY TRAINING** tab when you log in.
- Step 4:** Once you are enrolled in the training, open the training, and read the **TRAINING OVERVIEW**.
- Step 5:** Scroll down to the bottom of the page and select your read and sign your Learner Agreement, and select your Orientation and DSP Coaching Session. Once you have selected each session, click on the **SUPPLEMENTARY INFO** button for each for your Zoom link.

Useful Tips:

1. The training occurs in a sequential order. You must complete the first step before the next step is unlocked. Part 4: Reflection Survey will be unlocked 24 hours after you have attended the DSP Coaching Session.
2. If you need to reschedule and attend a different Orientation or Coaching Session, click on the **TRANSFER** button for the session on the **PART 1: REGISTRATION** page of your training and select the session you wish to switch into. 7 days before the Coaching Session you will be unable to transfer, and you will need to contact iemhp.learning@sickkids.ca.

Part 2: Orientation

Total duration: 30 minutes

Complete by: TBD

Join us for a 30-minute live orientation with your training Team, who will go over each component of the training in detail. We will walk through the training website, the Training Information Package, where to find the training materials, details regarding the learning activities and the overall expectations to successfully complete this training and receive a certificate of completion.

- Step 1:** Please download the training materials as instructed, found under the **OVERVIEW** section of your training page. Please save them somewhere safe as we will be referring to them throughout the training.

Part 3: Introduction to DSPs

Total Duration of Pre-Recorded Webinars: 1.5 hours

Total Duration of Learning Activity: 15 minutes

Total Duration of ASQ Coaching Session: 1.5 hours

Complete by: TBD



Before you start, **DOWNLOAD and SAVE** all the documents to your computer as found under *Part 3: Introduction to DSPs* of the **TRAINING MATERIALS** section of your training page.

Description: Participants will learn how to use their observations and conversations to create a DSP unique to each child. These DSPs are strengths-based and age-appropriate for each child, and unique to the needs of the family. They can be used throughout professional practice to enhance interactions between caregivers and the child.

Part 3a. Webinars

Total Duration of Pre-Recorded Webinars: 1 hour

- Step 1:** Watch the DSP Webinars
- Step 2:** Complete the DSP Post-Webinar Knowledge Survey (A score of 5/5 must be received to be considered complete)

Webinar Section	Duration
Section A: Introduction to Developmental Support Plans (DSP)	13 mins
Section B: What Informs a DSP	14 mins
Section C: Key Components of a DSP and How to Create a DSP	35 mins

Part 3b. Learning Activity

Total Duration of Learning Activity: 15 minutes

Participants are expected to know how to navigate the resource manual (find goals and strategies), copy and paste between the resource manual and the DSP template, and make edits within the DSP template.

Step 1: Complete the DSP Learning Activity. **DOWNLOAD and SAVE** all the documents to your computer as found under *Part 3: Introduction to DSPs* of the **TRAINING MATERIALS** section of your training page.

Practice using the resource manual and the templates prior to the coaching session.

Part 3c. DSP Coaching Session

Total Duration of DSP Coaching Session: 1.5 hours

Description: As a group, we will complete at least one other DSP from the *Case Studies and Scoring Exercises* package. The Coach will go over

any questions you have from Part 3 and address any other questions regarding engaging with families using a DSP.

- Step 1:** Review the instructions and save the Zoom link under the **SUPPLEMENTARY INFO** button for your selected DSP Coaching Session **on Part 1: REGISTRATION** page of the training.
- Step 2:** Ensure you have completed the Learning Activity in preparation of your coaching session.
- Step 3:** Attend and actively participate in DSP Coaching Session.

4

Part 4: Reflection Survey

- Step 1:** Complete the Reflection Feedback Survey